



MANITAL

Special Order - Made For You

THE FACTORY





Manital Special Order

Manital ordine speciale

- The finest quality door furniture from Lake Garda.
- Lifetime mechanical guarantee - Buy once, reduce waste.
- Exclusive to Carlisle Brass.
- Made for you - typical 4 week lead time.

#VALUETHINGSTHATLAST

CONTENTS





Finish codes & care instructions 6

Mortice knobs 8

Exa 14

Vola 15

Preso 16

Clinia 17

Francy 18

Alamaro 19

Blade 22

Cloud 23

Nirvana 24

Le mans 25

Dali 26

Giava 27

Veronica 30

Calla 31

Studio H 32

Apollo 33

Astro 34

Victoria 35

Mary 36

York 37

Plaza 38

Ibra 40

Lilla 41

Sliding doors 42

Pull handles 47

Accessories 48

How to buy 51

FINISHES & CARE INSTRUCTIONS

All of our products featured in this brochure are brass based and we offer a **lifetime mechanical guarantee**.

#VALUETHINGSTHATLAST

With a little TLC these products have outstanding anti-corrosive properties, if maintained as per the instructions for each finish, they too will last a lifetime. We have included cleaning instructions under each of the finishes, to help maintain your handle or mortice knob. Keeping it as fresh as the day you purchased it.



SB: SATIN BRASS

Use of a soft cloth soaked in warm soapy water and dried off with a microfibre cloth. Do not use of any chemicals or cleaning products on this finish to prevent a break-down of the lacquered top-coat. Annual oiling of all moving parts using a 3-in-1 Oil helps maintain the moving parts.



POLISHED BRASS

Use of a soft cloth soaked in warm soapy water and dried off with a microfibre cloth. Do not use of any chemicals or cleaning products on this finish to prevent a break-down of the lacquered top-coat. Annual oiling of all moving parts using a 3-in-1 Oil helps maintain the moving parts.



MB: MATT BLACK

Use of a soft cloth soaked in warm soapy water and dried off with a microfibre cloth. Do not use of any chemicals or cleaning products on this finish to prevent a break-down of the powder coat. Annual oiling of all moving parts using a 3-in-1 Oil helps maintain the moving parts.



AB: ANTIQUE BRASS

Use of a soft cloth soaked in warm soapy water and dried off with a microfibre cloth. Do not use of any chemicals or cleaning products on this finish to prevent a break-down of the lacquered top-coat. Annual oiling of all moving parts using a 3-in-1 Oil helps maintain the moving parts.



PN: POLISHED NICKEL

Use of a soft cloth soaked in warm soapy water and dried off with a microfibre cloth. Do not use of any chemicals or cleaning products on this finish to prevent a break-down of the plated finish. A microfibre dry cloth can also be used to wipe over the product and reduce finger marks. Annual oiling of all moving parts using a 3-in-1 Oil helps maintain the moving parts.



SN: SATIN NICKEL

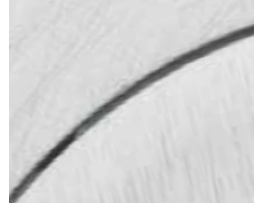
Use of a soft cloth soaked in warm soapy water and dried off with a microfibre cloth. Do not use of any chemicals or cleaning products on this finish to prevent a break-down of the plated finish. A microfibre dry cloth can also be used to wipe over the product and reduce finger marks. Annual oiling of all moving parts using a 3-in-1 Oil helps maintain the moving parts.

7

**MBRZ: MATT BRONZE**

As this is a live finish the product will naturally darken with age. Use of a soft cloth soaked in warm soapy water and dried off with a microfibre cloth. Do not use of any chemicals or cleaning products on this finish. Annual oiling of all moving parts using a 3-in-1 Oil helps maintain the moving parts.

8

**SC: SATIN CHROME**

Use of a soft cloth soaked in warm soapy water and dried off with a microfibre cloth. Do not use of any chemicals or cleaning products on this finish to prevent a break-down of the plated finish. A microfibre dry cloth can also be used to wipe over the product and reduce finger marks. Annual oiling of all moving parts using a 3-in-1 Oil helps maintain the moving parts.

9

**CP: POLISHED CHROME**

Use of a soft cloth soaked in warm soapy water and dried off with a microfibre cloth. Do not use of any chemicals or cleaning products on this finish to prevent a break-down of the lacquered top-coat. Annual oiling of all moving parts using a 3-in-1 Oil helps maintain the moving parts.

10

**SCO: SATIN COPPER**

Use of a soft cloth soaked in warm soapy water and dried off with a microfibre cloth. Do not use of any chemicals or cleaning products on this finish to prevent a break-down of the lacquered top-coat. Annual oiling of all moving parts using a 3-in-1 Oil helps maintain the moving parts.

11

**PCO: POLISHED COPPER**

Use of a soft cloth soaked in warm soapy water and dried off with a microfibre cloth. Do not use of any chemicals or cleaning products on this finish to prevent a break-down of the lacquered top-coat. Annual oiling of all moving parts using a 3-in-1 Oil helps maintain the moving parts.

12

**SCOUL: UNLACQUERED SATIN COPPER**

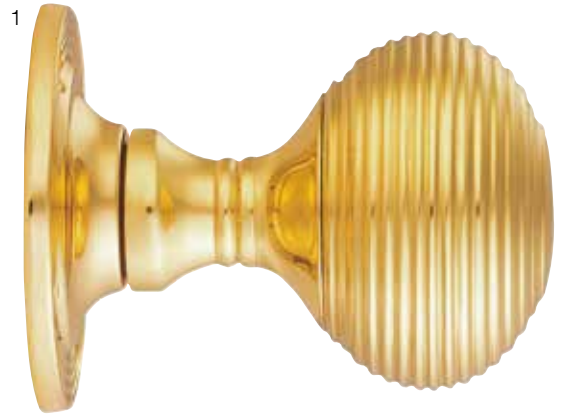
Antimicrobial Copper Alloys **continuously reduce bacterial contamination, achieving 99.9% reduction within two hours of exposure.** As the copper is unlacquered, it will naturally age through oxidisation, giving the product added character. However, if desired this finish can be maintained by using a dry cloth and Brasso which will clean this finish. Annual oiling of all moving parts using a 3-in-1 Oil helps maintain the moving parts.

13

**PCOUL: UNLACQUERED POLISHED COPPER**

Antimicrobial Copper Alloys **continuously reduce bacterial contamination, achieving 99.9% reduction within two hours of exposure.** As the copper is unlacquered, it will naturally age through oxidisation, giving the product added character. However, if desired this finish can be maintained by using a dry cloth and Brasso which will clean this finish. Annual oiling of all moving parts using a 3-in-1 Oil helps maintain the moving parts.

MORTICE KNOB M1001



- 1 M1001SB - Satin Brass
- 2 M1001 - Polished Brass
- 3 M1001MB - Matt Black
- 4 M1001AB - Antique Brass

- 5 M1001PN - Polished Nickel
- 6 M1001SN - Satin Nickel
- 7 M1001MBRZ - Matt Bronze
- 8 M1001SC - Satin Chrome

- 9 M1001CP - Polished Chrome
- 10 M1001SCO - Satin Copper
- 11 M1001PCO - Polished Copper
- 12 M1001SCOUL - Unlacquered Satin Copper
- 13 M1001PCOUL - Unlacquered Polished Copper

MORTICE KNOB M35



- 1 M35SB - Satin Brass
- 2 M35 - Polished Brass
- 3 M35MB - Matt Black
- 4 M35AB - Antique Brass

- 5 M35PN - Polished Nickel
- 6 M35SN - Satin Nickel
- 7 M35MBRZ - Matt Bronze
- 8 M35SC - Satin Chrome

- 9 M35CP - Polished Chrome
- 10 M35SCO - Satin Copper
- 11 M35PCO - Polished Copper
- 12 M35SCOUL - Unlacquered Satin Copper
- 13 M35PCOUL - Unlacquered Polished Copper

MORTICE KNOB M35C



- 1 M35CSB - Satin Brass
- 2 M35C - Polished Brass
- 3 M35CMB - Matt Black
- 4 M35CAB - Antique Brass

- 5 M35CPN - Polished Nickel
- 6 M35CSN - Satin Nickel
- 7 M35CCMBRZ - Matt Bronze
- 8 M35CSC - Satin Chrome

- 9 M35CCP - Polished Chrome
- 10 M35CSCO - Satin Copper
- 11 M35CPCO - Polished Copper
- 12 M35CSCOUL - Unlacquered Satin Copper
- 13 M35CPCOUL - Unlacquered Polished Copper



Matt Bronze Finish. Product code: M35CMBRZ





Satin Brass products.

EXA



- 1 XA5SB - Satin Brass
- 2 XA5 - Polished Brass
- 3 XA5MB - Matt Black
- 4 XA5AB - Antique Brass

- 5 XA5PN - Polished Nickel
- 6 XA5SN - Satin Nickel
- 7 XA5MBRZ - Matt Bronze
- 8 XA5SC - Satin Chrome

- 9 XA5CP - Polished Chrome
- 10 XA5SCO - Satin Copper
- 11 XA5PCO - Polished Copper
- 12 XA5SCOUL - Unlacquered Satin Copper
- 13 XA5PCOUL - Unlacquered Polished Copper

VOLA



- 1 VL5SB - Satin Brass
- 2 VL5 - Polished Brass
- 3 VL5MB - Matt Black
- 4 VL5AB - Antique Brass

- 5 VL5PN - Polished Nickel
- 6 VL5SN - Satin Nickel
- 7 VL5MBRZ - Matt Bronze
- 8 VL5SC - Satin Chrome

- 9 VL5CP - Polished Chrome
- 10 VL5SCO - Satin Copper
- 11 VL5PCO - Polished Copper
- 12 VL5SCOUL - Unlacquered Satin Copper
- 13 VL5PCOUL - Unlacquered Polished Copper

PRESO



- 1 PX5SB - Satin Brass
- 2 PX5 - Polished Brass
- 3 PX5MB - Matt Black
- 4 PX5AB - Antique Brass

- 5 PX5PN - Polished Nickel
- 6 PX5SN - Satin Nickel
- 7 PX5MBRZ - Matt Bronze
- 8 PX5SC - Satin Chrome

- 9 PX5CP - Polished Chrome
- 10 PX5SCO - Satin Copper
- 11 PX5PCO - Polished Copper
- 12 PX5SCOUL - Unlacquered Satin Copper
- 13 PX5PCOUL - Unlacquered Polished Copper

CLINIA



- 1 CL5SB - Satin Brass
- 2 CL5 - Polished Brass
- 3 CL5MB - Matt Black
- 4 CL5AB - Antique Brass

- 5 CL5PN - Polished Nickel
- 6 CL5SN - Satin Nickel
- 7 CL5MBRZ - Matt Bronze
- 8 CL5SC - Satin Chrome

- 9 CL5CP - Polished Chrome
- 10 CL5SCO - Satin Copper
- 11 CL5PCO - Polished Copper
- 12 CL5SCOUL - Unlacquered Satin Copper
- 13 CL5PCOUL - Unlacquered Polished Copper

FRANCY



- 1 FR5SB - Satin Brass
- 2 FR5 - Polished Brass
- 3 FR5MB - Matt Black
- 4 FR5AB - Antique Brass

- 5 FR5PN - Polished Nickel
- 6 FR5SN - Satin Nickel
- 7 FR5MBRZ - Matt Bronze
- 8 FR5SC - Satin Chrome

- 9 FR5CP - Polished Chrome
- 10 FR5SCO - Satin Copper
- 11 FR5PCO - Polished Copper
- 12 FR5SCOUL - Unlacquered Satin Copper
- 13 FR5PCOUL - Unlacquered Polished Copper

ALAMARO



- 1 AR5SB - Satin Brass
- 2 AR5 - Polished Brass
- 3 AR5MB - Matt Black
- 4 AR5AB - Antique Brass

- 5 AR5PN - Polished Nickel
- 6 AR5SN - Satin Nickel
- 7 AR5MBRZ - Matt Bronze
- 8 AR5SC - Satin Chrome

- 9 AR5CP - Polished Chrome
- 10 AR5SCO - Satin Copper
- 11 AR5PCO - Polished Copper
- 12 AR5SCOUL - Unlacquered Satin Copper
- 13 AR5PCOUL - Unlacquered Polished Copper





Matt Black products.

BLADE



- 1 BL5SB - Satin Brass
- 2 BL5 - Polished Brass
- 3 BL5MB - Matt Black
- 4 BL5AB - Antique Brass

- 5 BL5PN - Polished Nickel
- 6 BL5SN - Satin Nickel
- 7 BL5MBRZ - Matt Bronze
- 8 BL5SC - Satin Chrome

- 9 BL5CP - Polished Chrome
- 10 BL5SCO - Satin Copper
- 11 BL5PCO - Polished Copper
- 12 BL5SCOUL - Unlacquered Satin Copper
- 13 BL5PCOUL - Unlacquered Polished Copper

CLOUD



- 1 CD5SB - Satin Brass
- 2 CD5 - Polished Brass
- 3 CD5MB - Matt Black
- 4 CD5AB - Antique Brass

- 5 CD5PN - Polished Nickel
- 6 CD5SN - Satin Nickel
- 7 CD5MBRZ - Matt Bronze
- 8 CD5SC - Satin Chrome

- 9 CD5CP - Polished Chrome
- 10 CD5SCO - Satin Copper
- 11 CD5PCO - Polished Copper
- 12 CD5SCOUL - Unlacquered Satin Copper
- 13 CD5PCOUL - Unlacquered Polished Copper

NIRVANA



- 1 NI5SB - Satin Brass
- 2 NI5 - Polished Brass
- 3 NI5MB - Matt Black
- 4 NI5AB - Antique Brass

- 5 NI5PN - Polished Nickel
- 6 NI5SN - Satin Nickel
- 7 NI5MBRZ - Matt Bronze
- 8 NI5SC - Satin Chrome

- 9 NI5CP - Polished Chrome
- 10 NI5SCO - Satin Copper
- 11 NI5PCO - Polished Copper
- 12 NI5SCOUL - Unlacquered Satin Copper
- 13 NI5PCOUL - Unlacquered Polished Copper

LE MANS



- 1 LM5SB - Satin Brass
- 2 LM5 - Polished Brass
- 3 LM5MB - Matt Black
- 4 LM5AB - Antique Brass

- 5 LM5PN - Polished Nickel
- 6 LM5SN - Satin Nickel
- 7 LM5MBRZ - Matt Bronze
- 8 LM5SC - Satin Chrome

- 9 LM5CP - Polished Chrome
- 10 LM5SCO - Satin Copper
- 11 LM5PCO - Polished Copper
- 12 LM5SCOUL - Unlacquered Satin Copper
- 13 LM5PCOUL - Unlacquered Polished Copper

DALI



- 1 DA5SB - Satin Brass
- 2 DA5 - Polished Brass
- 3 DA5MB - Matt Black
- 4 DA5AB - Antique Brass

- 5 DA5PN - Polished Nickel
- 6 DA5SN - Satin Nickel
- 7 DA5MBRZ - Matt Bronze
- 8 DA5SC - Satin Chrome

- 9 DA5CP - Polished Chrome
- 10 DA5SCO - Satin Copper
- 11 DA5PCO - Polished Copper
- 12 DA5SCOUL - Unlacquered Satin Copper
- 13 DA5PCOUL - Unlacquered Polished Copper

GIAVA



- 1 GI5SB - Satin Brass
- 2 GI5 - Polished Brass
- 3 GI5MB - Matt Black
- 4 GI5AB - Antique Brass

- 5 GI5PN - Polished Nickel
- 6 GI5SN - Satin Nickel
- 7 GI5MBRZ - Matt Bronze
- 8 GI5SC - Satin Chrome

- 9 GI5CP - Polished Chrome
- 10 GI5SCO - Satin Copper
- 11 GI5PCO - Polished Copper
- 12 GI5SCOUL - Unlacquered Satin Copper
- 13 GI5PCOUL - Unlacquered Polished Copper





Polished Chrome Finish. Handle name: EXA. Product code: XA5CP

VERONICA



1 Image coming soon.



3 Image coming soon.



6 Image coming soon.



8 Image coming soon.



10 & 12 Image coming soon.

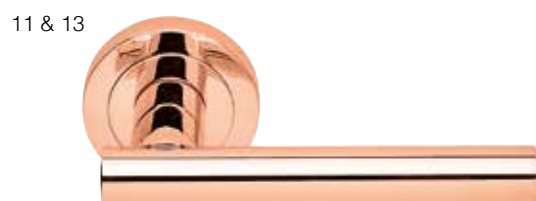


- 1 AQ5SB - Satin Brass
- 2 AQ5 - Polished Brass
- 3 AQ5MB - Matt Black
- 4 AQ5AB - Antique Brass

- 5 AQ5PN - Polished Nickel
- 6 AQ5SN - Satin Nickel
- 7 AQ5MBRZ - Matt Bronze
- 8 AQ5SC - Satin Chrome

- 9 AQ5CP - Polished Chrome
- 10 AQ5SCO - Satin Copper
- 11 AQ5PCO - Polished Copper
- 12 AQ5SCOUL - Unlacquered Satin Copper
- 13 AQ5PCOUL - Unlacquered Polished Copper

CALLA



- 1 AQ4SB - Satin Brass
- 2 AQ4 - Polished Brass
- 3 AQ4MB - Matt Black
- 4 AQ4AB - Antique Brass

- 5 AQ4PN - Polished Nickel
- 6 AQ4SN - Satin Nickel
- 7 AQ4MBRZ - Matt Bronze
- 8 AQ4SC - Satin Chrome

- 9 AQ4CP - Polished Chrome
- 10 AQ4SCO - Satin Copper
- 11 AQ4PCO - Polished Copper
- 12 AQ4SCOUL - Unlacquered Satin Copper
- 13 AQ4PCOUL - Unlacquered Polished Copper

STUDIO H



- 1 AQ2SB - Satin Brass
- 2 AQ2 - Polished Brass
- 3 AQ2MB - Matt Black
- 4 AQ2AB - Antique Brass

- 5 AQ2PN - Polished Nickel
- 6 AQ2SN - Satin Nickel
- 7 AQ2MBRZ - Matt Bronze
- 8 AQ2SC - Satin Chrome

- 9 AQ2CP - Polished Chrome
- 10 AQ2SCO - Satin Copper
- 11 AQ2PCO - Polished Copper
- 12 AQ2SCOUL - Unlacquered Satin Copper
- 13 AQ2PCOUL - Unlacquered Polished Copper

APOLLO



- 1 AQ3SB - Satin Brass
- 2 AQ3 - Polished Brass
- 3 AQ3MB - Matt Black
- 4 AQ3AB - Antique Brass

- 5 AQ3PN - Polished Nickel
- 6 AQ3SN - Satin Nickel
- 7 AQ3MBRZ - Matt Bronze
- 8 AQ3SC - Satin Chrome

- 9 AQ3CP - Polished Chrome
- 10 AQ3SCO - Satin Copper
- 11 AQ3PCO - Polished Copper
- 12 AQ3SCOU - Unlacquered Satin Copper
- 13 AQ3PCOU - Unlacquered Polished Copper

ASTRO



- 1 AQ1SB - Satin Brass
- 2 AQ1 - Polished Brass
- 3 AQ1MB - Matt Black
- 4 AQ1AB - Antique Brass

- 5 AQ1PN - Polished Nickel
- 6 AQ1SN - Satin Nickel
- 7 AQ1MBRZ - Matt Bronze
- 8 AQ1SC - Satin Chrome

- 9 AQ1CP - Polished Chrome
- 10 AQ1SCO - Satin Copper
- 11 AQ1PCO - Polished Copper
- 12 AQ1SCOU - Unlacquered Satin Copper
- 13 AQ1PCOUL - Unlacquered Polished Copper

VICTORIA



- 1 VC5SB - Satin Brass
- 2 VC5 - Polished Brass
- 3 VC5MB - Matt Black
- 4 VC5AB - Antique Brass

- 5 VC5PN - Polished Nickel
- 6 VC5SN - Satin Nickel
- 7 VC5MBRZ - Matt Bronze
- 8 VC5SC - Satin Chrome

- 9 VC5CP - Polished Chrome
- 10 VC5SCO - Satin Copper
- 11 VC5PCO - Polished Copper
- 12 VC5SCOUL - Unlacquered Satin Copper
- 13 VC5PCOUL - Unlacquered Polished Copper

MARY

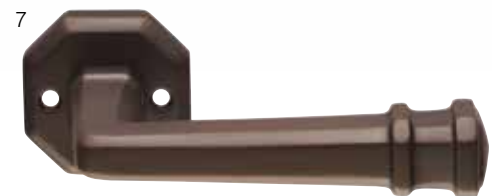


- 1 MR5SB - Satin Brass
- 2 MR5 - Polished Brass
- 3 MR5MB - Matt Black
- 4 MR5AB - Antique Brass

- 5 MR5PN - Polished Nickel
- 6 MR5SN - Satin Nickel
- 7 MR5MBRZ - Matt Bronze
- 8 MR5SC - Satin Chrome

- 9 MR5CP - Polished Chrome
- 10 MR5SCO - Satin Copper
- 11 MR5PCO - Polished Copper
- 12 MR5SCOUL - Unlacquered Satin Copper
- 13 MR5PCOUL - Unlacquered Polished Copper

YORK



- 1 YK5SB - Satin Brass
- 2 YK5 - Polished Brass
- 3 YK5MB - Matt Black
- 4 YK5AB - Antique Brass

- 5 YK5PN - Polished Nickel
- 6 YK5SN - Satin Nickel
- 7 YK5MBRZ - Matt Bronze
- 8 YK5SC - Satin Chrome

- 9 YK5CP - Polished Chrome
- 10 YK5SCO - Satin Copper
- 11 YK5PCO - Polished Copper
- 12 YK5SCOUL - Unlacquered Satin Copper
- 13 YK5PCOUL - Unlacquered Polished Copper

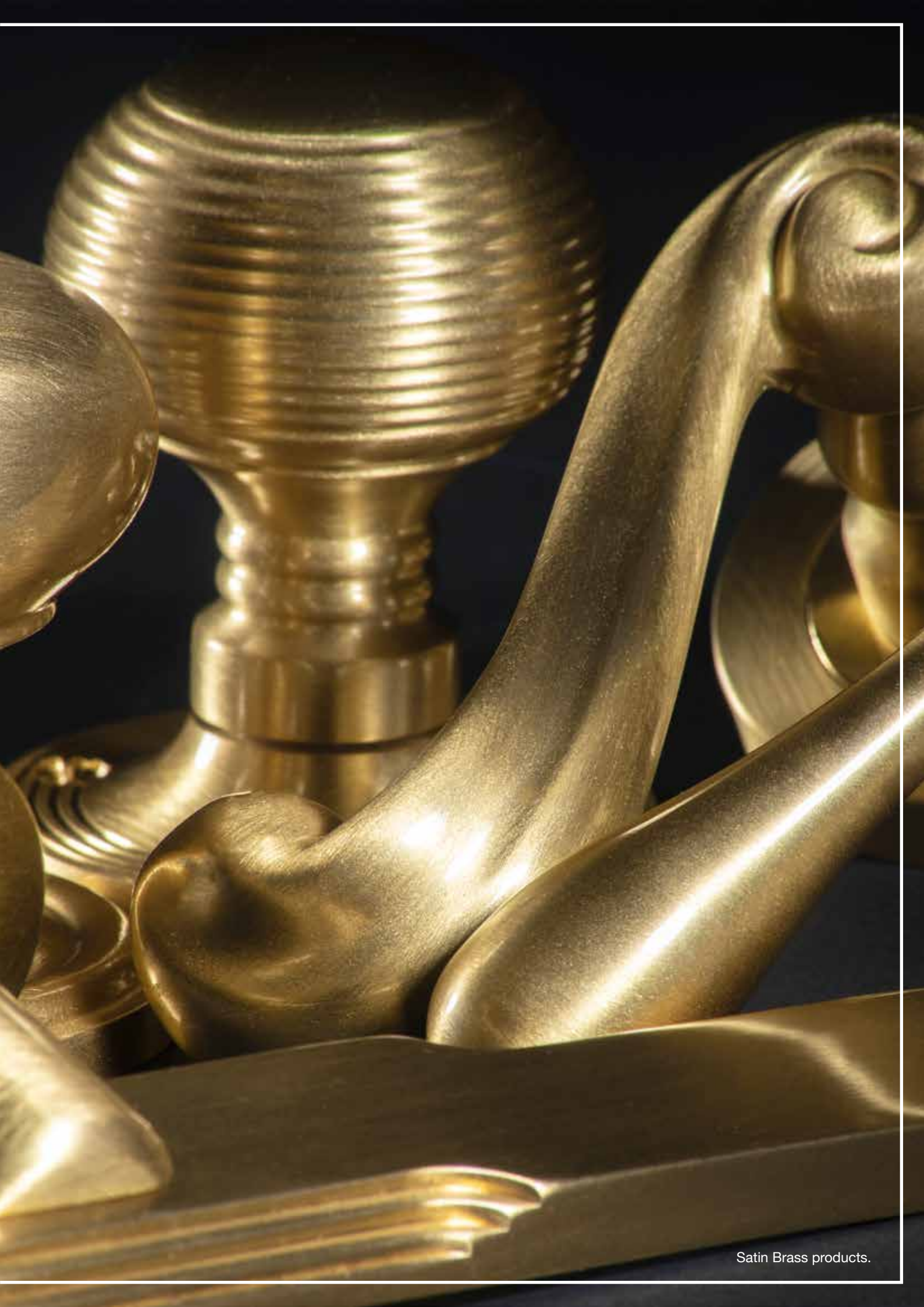
PLAZA



- 1 PZ5SB - Satin Brass
- 2 PZ5 - Polished Brass
- 3 PZ5MB - Matt Black
- 4 PZ5AB - Antique Brass

- 5 PZ5PN - Polished Nickel
- 6 PZ5SN - Satin Nickel
- 7 PZ5MBRZ - Matt Bronze
- 8 PZ5SC - Satin Chrome

- 9 PZ5CP - Polished Chrome
- 10 PZ5SCO - Satin Copper
- 11 PZ5PCO - Polished Copper
- 12 PZ5SCOUL - Unlacquered Satin Copper
- 13 PZ5PCOUL - Unlacquered Polished Copper



IBRA



1



2



3



4



5



6



7



8



9



10 & 12



11 & 13



Lock and Bathroom variations also available

EL11

Standard profile lock 57mm c/c

EL11Y

Euro profile lock 47.5mm c/c

EL13

Bathroom c/w turn and release at 57mm c/c

- 1 EL12SB - Satin Brass
- 2 EL12 - Polished Brass
- 3 EL12MB - Matt Black
- 4 EL12AB - Antique Brass

- 5 EL12PN - Polished Nickel
- 6 EL12SN - Satin Nickel
- 7 EL12MBRZ - Matt Bronze
- 8 EL12SC - Satin Chrome

- 9 EL12CP - Polished Chrome
- 10 EL12SCO - Satin Copper
- 11 EL12PCO - Polished Copper
- 12 EL12SCOUL - Unlacquered Satin Copper
- 13 EL12PCOUL - Unlacquered Polished Copper

LILLA



Lock and Bathroom variations also available

EL31
Standard profile lock 57mm c/c

EL31Y
Euro profile lock 47.5mm c/c

EL33
Bathroom c/w turn and release at 57mm c/c

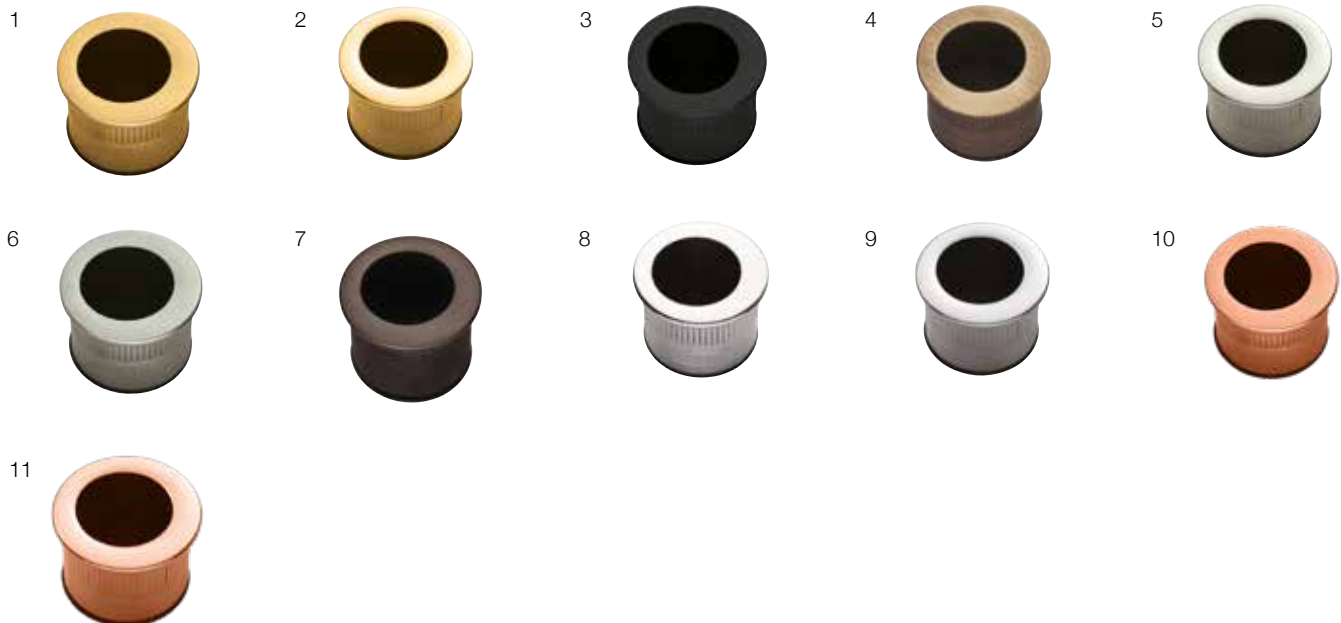
- 1 EL32SB - Satin Brass
- 2 EL32 - Polished Brass
- 3 EL32MB - Matt Black
- 4 EL32AB - Antique Brass

- 5 EL32PN - Polished Nickel
- 6 EL32SN - Satin Nickel
- 7 EL32MBRZ - Matt Bronze
- 8 EL32SC - Satin Chrome

- 9 EL32CP - Polished Chrome
- 10 EL32SCO - Satin Copper
- 11 EL32PCO - Polished Copper
- 12 EL32SCOUL - Unlacquered Satin Copper
- 13 EL32PCOUL - Unlacquered Polished Copper

SLIDING DOORS

Small Flush Pull



- 1 ART56SB - Satin Brass
- 2 ART56 - Polished Brass
- 3 ART56MB - Matt Black

- 4 ART56AB - Antique Brass
- 5 ART56PN - Polished Nickel
- 6 ART56SN - Satin Nickel
- 7 ART56MBRZ - Matt Bronze

- 8 ART56SC - Satin Chrome
- 9 ART56CP - Polished Chrome
- 10 ART56SCO - Satin Copper
- 11 ART56PCO - Polished Copper

Sliding Door Rose With Flush Pull

12



13



14



15



16



17



18



19



20



21



22



12 ART54ASB - Satin Brass

13 ART54A - Polished Brass

14 ART54AMB - Matt Black

15 ART54AAB - Antique Brass

16 ART54APN - Polished Nickel

17 ART54ASN - Satin Nickel

18 ART54AMBRZ - Matt Bronze

19 ART54ASC - Satin Chrome

20 ART54ACP - Polished Chrome

21 ART54ASCO - Satin Copper

22 ART54APCO - Polished Copper

Sliding Door Set c/w WC Turn, Flush Pull and Lock



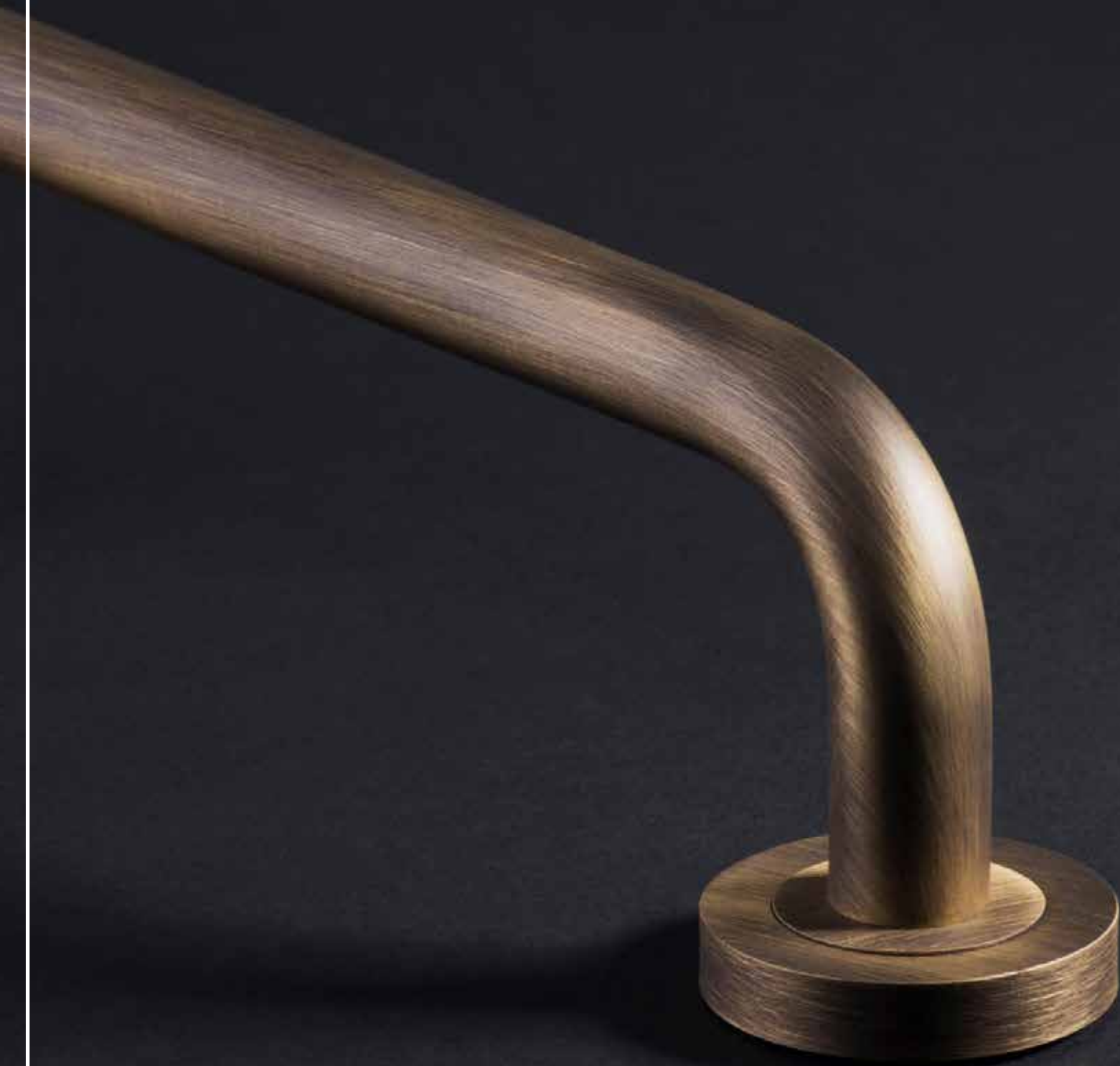
- 23 ART55BSB - Satin Brass
- 24 ART55B - Polished Brass
- 25 ART55BMB - Matt Black

- 26 ART55BAB - Antique Brass
- 27 ART55BPN - Polished Nickel
- 28 ART55BSN - Satin Nickel
- 29 ART55BMBRZ - Matt Bronze

- 30 ART55BSC - Satin Chrome
- 31 ART55BCP - Polished Chrome
- 32 ART55BSCO - Satin Copper
- 33 ART55BPCO - Polished Copper



Matt Black products.



Antique Brass Finish. Product code: AA16AB

PULL HANDLE AA16

1



5 Sizes Available

Size A: 150mm code- AA16A

Size B: 229mm code- AA16B

Size C: 305mm code- AA16C

Example code: when ordering with finish SB (Satin Brass)

Size A: AA16ASB

Size B: AA16BSB

Size C: AA16CSB

2



3



4



5



6



7



8



9



10 & 12



11 & 13



- 1 AA16SB - Satin Brass
- 2 AA16 - Polished Brass
- 3 AA16MB - Matt Black
- 4 AA16AB - Antique Brass

- 5 AA16PN - Polished Nickel
- 6 AA16SN - Satin Nickel
- 7 AA16MBRZ - Matt Bronze
- 8 AA16SC - Satin Chrome

- 9 AA16CP - Polished Chrome
- 10 AA16SCO - Satin Copper
- 11 AA16PCO - Polished Copper
- 12 AA16SCOUL - Unlacquered Satin Copper
- 13 AA16PCOUL - Unlacquered Polished Copper



ACCESSORIES

We have a complimentary range of matching accessories for all our Manital handles, please visit our website to discover more.

www.carlislebrass.com





Matt Black Finish. Product code: PZ5MB

HOW TO BUY

Manital products are exclusive to Carlisle Brass and sold via our distributors, who sell via retail shops and showrooms, trade counters or their website.



To find a local distributor to you:
Please visit **www.carlislebrass.com/stockist**

Lifetime mechanical guarantee - Buy once, reduce waste.
#VALUETHINGSTHATLAST

DISCLAIMER

At the time of publication all information was correct.
We reserve the right to make technical changes.



Sales: +44 1228 511030

Carlisle Brass Ltd, Parkhouse Road, Carlisle, CA3 0JU

enquiries@carlislebrass.com

www.carlislebrass.com

